

# JEJU TOURISM UNIVERSITY 2025

## Admission Procedure Information Guide for International Students



# Associate Degree (2 yrs)

## Dept. of Tourism Leisure Sports



⊙ Established in 1996 as the Department of Leisure and Sports, our department has been dedicated to training future professionals for the leisure and sports industry in the era of the Fourth Industrial Revolution. We take pride in being the only program in Jeju to offer a major in security management, focusing on cultivating experts in the security and surveillance field responsible for the safety of Jeju, an international free city. Through a differentiated educational approach that emphasizes practical training, we operate state-of-the-art educational facilities and tailor-made programs, ensuring effective communication with industries to provide industry-specific education.

## Dept. of Chinese



⊙ The Tourism Chinese Language program aims to educate experts who can lead in the 21st century with a focus on China. We emphasize proficiency in Chinese conversational skills and a deep understanding of Chinese culture. Our students aim for high scores on the HSK examination, and we strive to nurture global talents capable of working as Chinese interpreters, cultural mediators, tourism professionals in China, language translators, and contributors to Sino-Korean economic exchanges.

## Dept. of Hotel Culinary Arts



⊙ The Tourism Hotel Culinary program is dedicated to training professionals in culinary arts, pastry and baking, as well as coffee-related expertise. We provide education through practical field experience and intensive learning, focusing on the skills required in the industry. As a result, we take pride in our high employment rates. We offer state-of-the-art practice facilities, certification courses, and club activities to provide students with a satisfying educational experience, along with support for overseas employment and entrepreneurship opportunities.

## Dept. of Game Contents



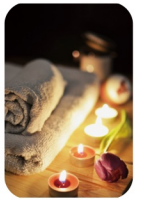
⊙ The Game Contents program is designed to train professionals who can plan, develop, and operate games that provide users with engaging experiences through interactive content in the virtual world, built on computer graphics and programming. Additionally, our department was selected for the government's industry-academic cooperation project, fostering a synergy between academia and industry. Along with state-of-the-art educational facilities, we actively engage with industry partners to expand employment opportunities for our students.

## Dept. of Mechatronics



⊙ We operate based on the National Competency Standards (NCS) and competency-based educational programs.  
⊙ Improving practical skills in the field through participation in major-specific student clubs and organizations.  
⊙ High pass rates in obtaining industrial certifications and a high employment rate.

## Dept. of Beauty Design



⊙ Exclusive hair and beauty education at Pivot Point Beauty School in the United States.  
⊙ Specialization in skincare and beauty advising, team projects, and participation in functional skills competitions.  
⊙ Operation of classes focused on obtaining national qualifications in makeup and nail art, as well as participation in competitions.

## Dept. of Social Welfare



⊙ The Department of Social Welfare is dedicated to training professionals in human services with strong ethical values, responsible for enhancing the quality of life and happiness of the people. We provide intensive learning and practical field experience to cultivate experts in the welfare sector. As a result, we take pride in our high employment rates. We maintain a strong connection with industries through state-of-the-art educational facilities and curriculum design, enabling us to deliver industry-tailored education to meet the demands of businesses.

## Dept. of Interior Architecture



⊙ Through specialized education in the fields of interior design and architecture, students can obtain relevant architectural qualifications and become proficient in architectural design. Graduates can choose to work in either the interior design or architectural fields based on their aptitude. For students who wish to continue their education, guidance is provided to transfer to a four-year university's architecture department.

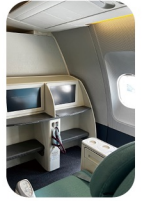
## Dept. of Casino Management

◎ The Casino Management program is dedicated to training professionals in the casino industry, which plays a central role in the tourism sector. We emphasize practical field experience and intensive hands-on training to prepare experts for the industry. As a result, we boast a high employment rate. We maintain specialized educational facilities and curriculum design similar to casino establishments, ensuring effective communication with the industry to provide tailored education that aligns with business needs.



## Dept. of Airlines Services

◎ The Aviation Service program is committed to nurturing competitive professionals in aviation service with international cultural awareness and specialized service knowledge. Our aim is to cultivate individuals with a strong service mindset and international sensibility. We provide education that focuses on service with an international perspective and enhance students' practical skills through industry field experience. We operate programs designed to improve their professional skills in aviation service.



## Dept. of Hotel Tourism

◎ We are actively involved in innovating the education sector for the training of hotel and tourism professionals, with a strong focus on participating in emerging industries. We offer collaborative education programs involving industry partnerships and strive to foster specialized professionals in hotel and tourism through various initiatives. These initiatives include obtaining specialized qualifications, participating in international internships, operating specialized hotel and tourism programs, and maintaining competitive educational facilities and classrooms for hotel and tourism courses.



## Contact Information

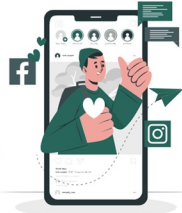


Homepage	www.jtu.ac.kr	E-mail	jejuorum@jtu.ac.kr
Address	Office of International Affairs, 1F Chowongwan, 2715, Pyeonghwa-ro, Aewol-eup, Jeju-si, Jeju-do, Republic of Korea (Zipcode: 63063)		
Tel.	+82-64-740-8859	Fax.	+82-64-740-8886



## JTU SNS

QR코드를 스캔하고 제주관광대학교의 다양한 소식을 확인하세요!



## 01 JEJU TOURISM UNIVERSITY



www.jtu.ac.kr

## 02 JEJU TOURISM UNIVERSITY Blog



## 03 JEJU TOURISM UNIVERSITY Facebook



## 04 JEJU TOURISM UNIVERSITY Instagram



# Bachelor's Degree (4 yrs)

## Dept. of Nursing

☉ The nursing department sets a vision to lead the future of nursing and values of humanity. It prepares nursing professionals who are equipped to meet the changing healthcare environment, with a foundation in character education, and focuses on practical skills to provide therapeutic care. As a result, it boasts a high national licensure pass rate and strong employment rates. Furthermore, the department is dedicated to enhancing professional competence, offering various practical education programs, including state-of-the-art educational facilities and hands-on anatomy experiences



## Dept. of Entrepreneurship & Marketing

☉ The Department of Entrepreneurial Marketing is an interdisciplinary program that combines entrepreneurship and marketing strategies. It aims to provide students with specialized knowledge and practical skills related to entrepreneurship, enabling them to successfully initiate and grow new businesses.

☉ After majoring in Entrepreneurial Marketing, graduates have the option to start their own businesses as entrepreneurs or build a career in various industries based on marketing strategies. They can also play a role in supporting entrepreneurs at startup support organizations or consulting firms



## Dept. of Medical Tourism Coordinator

☉ Enrolled in a 4-year program that is essential for medical tourism, providing training for the national technical qualification of 'International Medical Tourism Coordinator.' Students have the opportunity to take the national technical qualification examination while they are in school.

☉ Training medical tourism marketers to attract foreign patients for medical tourism.

☉ Training medical tourism interpreters for foreign patients.



## Dept of Casino Integrated Resort Management

☉ Employment opportunities in various fields within a integrated resort (Hotelier Casino dealer, human resources, cage, food and beverage, marketing, etc.)

☉ Korea's first customized 4-year program for integrated resort management.

☉ "Offering an integrated qualification program within the 4-year degree program (casino dealer certification, computerized accounting, wine sommelier, etc.).



# Associate Degree (3 yrs)

## Dept. of Optometry

☉ The Department of Optical Science and Engineering is the only prestigious department in the Jeju region. It boasts a high pass rate for the national optician examination and a high employment rate. It has produced top-ranking students. With a faculty known for their outstanding practical skills, the department provides hands-on, industry-focused education. Additionally, it offers international certification programs for contact lens fitting and runs group study sessions for obtaining American optician and international contact lens management qualifications. With state-of-the-art educational facilities and a well-structured curriculum, the department aims to train professional opticians equipped with practical skills to contribute to the eye health of the public.



## Dept. of Early Childhood Education

☉ The field of early childhood education aims to prepare educators with creative and interdisciplinary skills to adapt to the challenges of the Fourth Industrial Revolution. It emphasizes practical hands-on experience and intensive learning processes to cultivate professional talent, resulting in a high employment rate. Specialized educational facilities and curriculum design enable effective communication with industries, facilitating industry-tailored education.



## Dept. of Dental Technology

☉ High national examination pass rates and high employment rates.

☉ Support for employment in overseas precision engineering industries through the operation of a global talent development program after graduation.

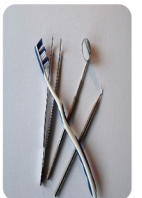
☉ Operation of a specialized project for overseas employment of dental technicians in New Zealand.

☉ Practical field education through excellent faculty members.



## Dept. of Dental Hygiene

☉ The Dental Hygiene program focuses on enhancing the practical skills of dental hygienists through clinical internships. It achieves high pass rates in the national licensing exams and a high employment rate by offering annual national exam preparation courses and one-on-one practical training.



## Dept. of Intelligent Cold Chain System

☉ Intelligent Cold Chain Engineering program is designed to educate professionals who can meet the demands of the local industry in Jeju, which is expanding and evolving into the sixth industrial revolution. This program equips students with engineering expertise to apply specialized knowledge and collaborate effectively in response to technological advancements, enabling them to integrate new technologies into cold chain systems.

☉ Furthermore, we offer an educational curriculum designed to cultivate professionals capable of integrating technologies such as the Internet of Things (IoT), mobile robots, and smart mobility into cold chain technology, with a key focus on maintaining product freshness and quality.



# 2025 Academic Year Jeju Tourism University Admission Procedure Information Guide for International Students

## 1 Admission Schedule

Recruitment Period	Application Submission	Interview	Announcement of Successful Applicants	Enrollment of Successful Applicants
<b>Rolling Admission</b>	2024. 11. 01 ~ 2024. 11. 30	2024. 11. 18. ~ 2024. 12. 06	2024. 12. 30 ~ 2025. 01. 10	2025. 02. 03. ~ 2025. 02. 14
<b>Regular Admission</b>	2025. 01. 13 ~ 2025. 01.31	Early Decision Applicant Interview	Early Decision Acceptance Announcement	Early Decision Registration

## 2 Weighted Grading Scale

Weighted Grading Scale	Weighting Percentag			Remarks
<b>Korean track Recruitment Department</b>	Document screening	Interview	Total	·Refer to the 'Recruitment Unit' below"
	50%	50%	100%	
<b>English track Recruitment Department</b>	Document screening	Interview	Total	·Dept of Entrepreneurship&Marketing ·Dept of Casino Integrated Resort Management ·Dept of Hotel Tourism ·Dept of Hotel Culinary Arts ·Dept of Airlines Services
	50%	50%	100%	

## 3 Qualification for Application

- ⊙ As foreigners whose parents are both foreign nationalities a foreigner with a high school or higher education
- ⊙ Foreigners who have no problems issuing a Korean visa (VISA)
- ⊙ Admission Language Requirement
  - Only the language proficiency documents that fall under the date before the application deadline will be recognized
  - Domestic Applicants: Those who have achieved a level 2 or higher on the Korean Language Proficiency Test (TOPIK) or Jeju Tourism University's Korean Language Proficiency Test, completed Sejong Hakdang's Intermediate Korean Level 1, or graduated from the Ministry of Justice's Social Integration Program Level 3.
  - International Applicants: Those who have achieved a level 3 or higher on the Korean Language Proficiency Test (TOPIK) or completed Sejong Hakdang's Intermediate Korean Level 1.
  - English Proficiency Test TOEFL 503, CBT 197, IBT 71, IELTS 5.5, CEFR B2, TEPS score of 600 (NEW TEPS score of 326)

**Jeju Tourism University**



## 4 Department of Recruitment and Number of Available Positions

Department/Major	Admission Category		Department/Major	Admission Category	
	Time for Completion	Remarks		Time for Completion	Remarks
Nursing	4		Chinese	2	
Casino Integrated Resort Management	4	English track	Hotel Culinary Arts	2	English track
Entrepreneurship & Marketing	4	English track	Mechatronics	2	
Medical Tourism Coordinator	4		Beauty Design	2	
Intelligent Cold Chain System	3		Social Welfare	2	
Optometry	3		Social Welfare(night)	2	
Early Childhood Education	3		Interior Architecture	2	
Dental Technology	3		Interior Architecture(night)	2	
Dental Hygiene	3		Casino Management	2	
Game Contents	2		Airlines Services	2	English track
Tourism Leisure Sports	2		Hotel Tourism	2	English track

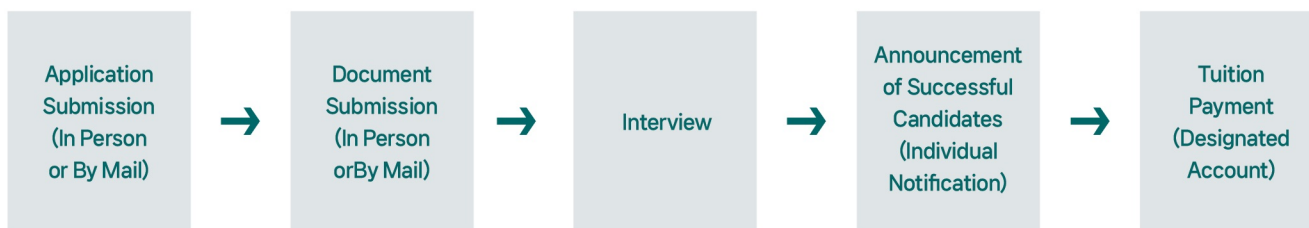
⊙ Nursing department is excluded

## 5 Required Documents

No.	DOCUMENTS	REMARKS
1	Application Form [Attached form 1]	
2	Record of Academic Period [Attached form 2]	
3	Personal Statement [Attached form 3]	
4	Affidavit of Financial Support for Study Abroad [Appendix Form 4]	
5	Copy of the personal information page of your passport	
6	Color photograph in JPG file and 3 prints (3.5cm×4.5cm) (Taken within the last 6 months, white background)	
<b>If the below documents are in the native language, notarized translation into Korean or English is required.</b>		
7	Notarization of the applicant's birth certificate Copy and notarization of the applicant's identification card	
8	Copy and notarization of the parents' national identification cards	
9	Notarization of the family relationship certificate with parents (for China: Household Register) - In case of parents being divorced or deceased: Submit divorce certificate or death certificate - If the Household Register differs from the parents, submit an additional notarized kinship certificate	
10	Educational Credential Notarization: - high school diploma and high school transcript Choose one of the following options (for schools within China, only option ③ is available): ① Documents proving the degree (education) with Apostille certification (for countries that are members of the Apostille Convention). ② Documents proving the degree (education) authenticated by the Korean Consulate in the country where the school is located or by the consulate of the country in Korea. ③ For degrees obtained in China, a degree certification report issued by the China Academic Degrees and Graduate Education Development Center (CHSI - 学信网).	
11	Bank balance certificate of the applicant or the financial guarantor (only parents are allowed)	
12	Notarized employment certificate or career certificate of the applicant or the financial guarantor	
13	Notarized income certificate of the applicant or the financial guarantor	
14	If the financial guarantor is a self-employed individual, a copy of the business registration certificate	
15	Notarized property ownership certificate of the applicant or the financial guarantor	
16	Financial proof special case for Vietnamese language trainees	
17	Korean language proficiency test or language proficiency score documents (if applicable) - TOPIK, TOEFL, IELTS, Social Integration Program, etc.	

- ⊙ All documents must have been issued within 30 days of the date of application.
- ⊙ All documents must be in Korean or English.
- ⊙ Bank statement (valid for 30 days), bank account deposit and withdrawal statement, etc.
- ⊙ Tuberculosis test result certificate is limited to high-risk countries for tuberculosis. - upon entry
  - countries: Nepal, Russia, Malaysia, Mongolia, Myanmar, Bangladesh, Vietnam, Sri Lanka, Uzbekistan, India, Indonesia, China, Cambodia, Kyrgyzstan, Thailand, Pakistan, Philippines
- ⊙ Documents proving family relationships are limited to 21 countries notified by the Minister of Justice.
  - countries: Ghana, Nigeria, Nepal, Mongolia, Myanmar, Bangladesh, Vietnam, Sri Lanka, Uzbekistan, Ukraine, Iran, Egypt, India, Indonesia, China, Kazakhstan, Kyrgyzstan, Thailand, Pakistan, Peru, Philippines.
- ⊙ Be sure to sign each document and the signature of the person who pays for the study abroad expenses.
  - Depending on the applicant's country and qualifications, documents required for admission and visa issuance may be added or reduced.
  - Depending on the applicant's country and qualifications, documents proving financial ability (bank statements, etc.) may vary.
  - The identity of a resident in Korea can be verified by a Korean citizen or a person who has acquired Korean nationality
  - If you have paid the application fee and tuition fee in the name of a guarantor or another person other than the applicant's own name, please be sure to contact the International Affairs Service to confirm the remittance.
  - Students who have submitted an enrollment certificate must also submit a graduation certificate after graduation
  - Depending on the applicant's qualifications, the documents required for visa issuance may be added or subtracted.

## 6 How to Apply



- ⊙ A. Applicants must submit the school application and required documents by the specified deadline.
- ⊙ B. Submitted admission applications and supporting documents will not be returned. However, only unsuccessful applicants who submitted their application documents in their original form may request their return during the admission period. After this period, the school is not responsible for document retention.
- ⊙ C. Applicants will be excluded from the admission process if their submitted documents are incomplete, if information provided in the documents is found to be false, or if their motivation for application is deemed unclear.
- ⊙ D. Information and grades related to the admission process will not be disclosed.
- ⊙ E. Once the documents are submitted, it is not possible to cancel the application or make corrections to their contents, and duplicate applications are not allowed.

## 7 Application Fee: 20,000KRW

## 8 Scholarship

Scholarship	Period	Eligibility	Benefits	Payment Period
Scholarship for Outstanding Korean Language Proficiency	Upon Registration	TOPIK level 3 Acquirer	30% of Tuition Fee	Admission-based upfront waiver
		TOPIK level 4 or higher Acquirer	40% of Tuition Fee	Admission-based upfront waiver
Outstanding International Student Scholarship	Upon Registration	High school president recommendation	Tuition Fee exemption for 1 semester	Admission-based upfront waiver or post payment
		Top 10% of the class		
		Recommendation from Korean Language Course		
Scholarship for Outstanding	During Enrollment	High academic score per major (except summer/winter semester)	A: 100% Tuition Fee	Every semester based on tuition
			B: 50% of Tuition Fee	

## 8 Scholarship

Scholarship	Period	Eligibility	Benefits	Payment Period
Academic Performance in Degree Program		Scholarship may vary based on major/class scores	C: 25% of Tuition Fee	
			D: 300,000W	
International Student TOPIK scholarship	During Enrollment	TOPIK level 4 Acquirer	40% of Tuition Fee	Start of the next semester
		TOPIK level 5 Acquirer	50% of Tuition Fee	Start of the next semester
		TOPIK level 6 Acquirer	60% of Tuition Fee	Start of the next semester

- ⊙ If you have an IELTS score of 5.5 or higher, you will be considered a TOPIK level 3 achiever.
- ⊙ Scholarship for Outstanding Korean Language Proficiency: First JTU semester Tuition Fee exemption as TOPIK acquirer
- ⊙ Outstanding International Student Scholarship: First JTU semester Tuition Fee exemption if one out of three criteria is met
- ⊙ Scholarship for Outstanding Academic Performance in Degree Program: Check appendix 2 for eligibility
- ⊙ International Student TOPIK scholarship: Scholarship eligible for highest TOPIK level per semester

## 9 Tuition Fees (As of 2024)

Division	Department	Grade	Tuition Fee (1st Semester)	Tuition Fee (2nd Semester)	Remarks
Social Administration	Hotel Tourism (2 yrs)	Freshman	2,354,000Won	2,166,000Won	English Track
	Casino Management (2 yrs)				
	Airlines Services (2 yrs)				English Track
	Early Childhood Education (3 yrs)				
	Social Welfare (2 yrs)				
	Chinese (2 yrs)				
Arts and physical education	Tourism Leisure Sports (2 yrs)		2,813,500Won	2,652,500Won	
Industrial	Game Contents (2 yrs)		2,813,500Won	2,625,500Won	
	Mechatronics (2 yrs)				
	Intelligent Cold Chain System (3 yrs)				
	Interior Architecture (2 yrs)				
Family and Consumer Sciences	Hotel Culinary Arts (2 yrs)		2,632,000Won	2,444,000Won	English Track
Publical	Dental Hygiene (3 yrs)		2,868,500Won	2,680,500Won	
	Beauty Design (2 yrs)				
	Optometry (3 yrs)				
	Dental Technology (3 yrs)				
	Nursing (4 yrs)	2,811,000Won	2,693,000Won		
Humanities and Social Sciences	Casino Integrated Resort Management (4 yrs)	3,088,000Won	2,900,000Won	English Track	
	Entrepreneurship&Marketing (4 yrs)			English Track	
	Medical Tourism Coordinator (4 yrs)				

## 10 Guidelines for Submission

- ⊙ Submitted documents and applications will not be returned
- ⊙ In case of incomplete required documents, the application will be disqualified
- ⊙ If forgery or alteration of documents is later confirmed, admission will be revoked even after acceptance
- ⊙ Once the application is submitted and completed, no documents will be returned in case of cancellation
- ⊙ Additional required documents beyond those specified may be requested, and in such cases, the requested documents must be submitted without fail
- ⊙ Personal information related to admission applications will not be used for purposes other than admission, and it is considered as consent to the use and provision of personal information by the individual for the stated purpose